

A close-up photograph of a surgical instrument, possibly a laparoscopic grasper, resting on a polished metal surface. The instrument has a red handle and a silver metal shaft. The background is a blurred blue and white pattern, possibly a surgical drape.

  
**surgical**holdings

AWARD WINNING UK MANUFACTURER &  
REPAIRER OF SURGICAL INSTRUMENTS

## Veterinary Laparoscopy Endoscopy



**HERMANN**  
MEDIZINTECHNIK



Advanced  
German Engineered  
instruments for  
endoscopy &  
laparoscopic surgery  
V1

**HERMANN**  
MEDIZINTECHNIK

## Telescopes



**Telescope, HD**  
autoclavable, wide angle

Ø 2,7 mm, 187.5 mm

0° **H82-187-000**  
30° **H82-187-030**  
70° **H82-187-070**

### Hermann multi purpose scope

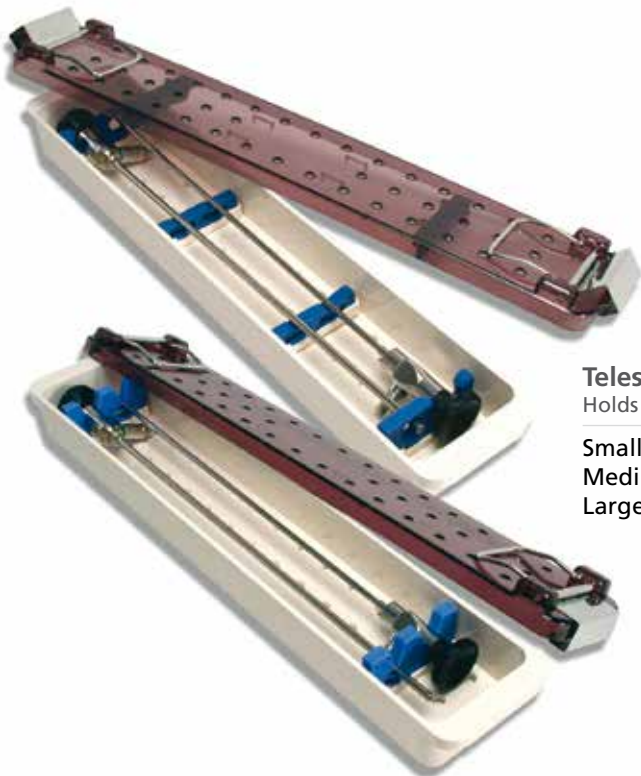
- Rhinology (dogs & cats)
- Sinuscopy (dogs)
- Laryngoscopy (dogs & cats)
- Bronchoscopy (cats & other small animals)
- Laparoscopy (dogs, cats & other small animals)
- Miniature Laparoscopy (animals under 10kg)
- Arthroscopy (dogs)

**Telescope, HD**  
autoclavable, wide angle

Ø 2,0 mm, 187.5 mm

0° **H82-020-000**  
30° **H82-020-030**

**Hermann smaller diameter Scopes**  
for small animals (under 10kg) and birds

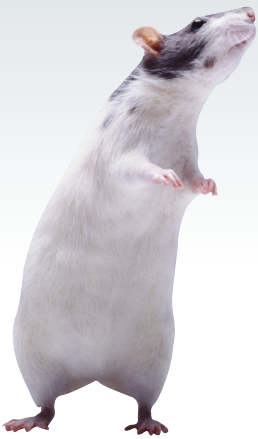


### Telescope Cases

Holds 2 scopes 1 to 10 mm

Small double scope case,	27.1 x 7 x 3.5 cm	<b>H188-99001</b>
Medium double scope case,	39.4 x 7 x 3.5 cm	<b>H188-99002</b>
Large double scope case,	45.7 x 7 x 3.5 cm	<b>H188-99003</b>

**HERMANN**  
MEDIZINTECHNIK



### Cold light cables with adapters

Autoclavable, high flexibility and tensile strength,  
STORZ-connections

Ø 3,5 mm		Ø 4,8 mm	
180 cm	<b>H91-180-035</b>	180 cm	<b>H91-180-045</b>
230 cm	<b>H91-230-035</b>	230 cm	<b>H91-230-045</b>
300 cm	<b>H91-300-035</b>	300 cm	<b>H91-300-045</b>

Interchangeable adapters ensure, that the light sources can be operated with all types of endoscopes. If not stated differently we will supply fitting to Storz connection.

These cables are also available in blue, green, yellow and red



### Cold light cables without adapters

Autoclavable, high flexibility and tensile strength

Ø 3,5 mm		Ø 4,8 mm	
180 cm	<b>H91-180-135</b>	180 cm	<b>H91-180-145</b>
230 cm	<b>H91-230-135</b>	230 cm	<b>H91-230-145</b>
300 cm	<b>H91-300-135</b>	300 cm	<b>H91-300-145</b>

### Light guide adapters

Instrument side

Adapter Storz / Winter / Olympus / B. Braun	<b>H91-100-001</b>
Adapter HSW / Wolf / Richards / Dyonics	<b>H91-100-002</b>
Adapter ACMI / British Standard / Stryker	<b>H91-100-003</b>

Projector side

Adapter Storz	<b>H91-100-010</b>
Adapter Wolf / Richards	<b>H91-100-020</b>
Adapter Olympus	<b>H91-100-030</b>
Adapter ACMI / British Standard / Stryker	<b>H91-100-050</b>

## Instruments



**sheath** with 2 fix stopcocks and obturator

colour code red  
1 working channel 5 Charr.

colour code green  
1 working channel 3 Charr.

colour code blue  
1 working channel 3 Charr.

13 Charr. **H50-013-010**

11 Charr. **H50-011-010**

9,5 Charr. **H50-095-010**

To use with scopes  
Ø 2.7 mm, 187 mm length

Ø 2.7/2 mm, 187 mm length

Ø 2.0 mm, 187 mm length

### Sheath only

13 Charr. **H50-013-011**

11 Charr. **H50-011-011**

9,5 Charr. **H50-095-011**

### Obturator

for cystoscope-urethroscope sheath

13 Charr. **H50-013-012**

11 Charr. **H50-011-012**

9,5 Charr. **H50-095-012**



### Telescope bridge for sheath

13 Charr. **H50-013-018**

